



# Roseville 51

Suitable for a 18m frontage

OPULENT FACADE

 10  6  2



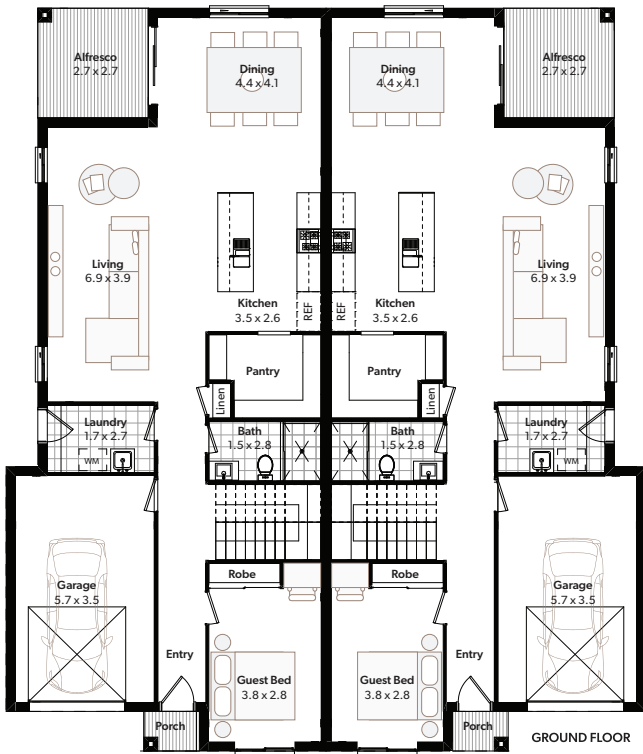
More Facades Available!

**Included in this home as part of our Elite Inclusions:**

- 600x600mm Porcelain Tiles to all Common Ground Floor Areas
- PGH Brick Facade with Monier Roof Tiles
- 2600mm High Ceilings
- Quality Watty! Three-Coat Paint System to Walls and Ceilings
- 2400mm High Cupboards with Bulkhead
- 20mm Stone Benchtop to Kitchen
- Westinghouse 900mm Kitchen Appliances
- Full Height Tiling to Bathrooms
- Full Laundry with 20mm Stone benchtop, Cabinetry, Sink
- **PLUS much more!**

**Talk to your consultant today for pricing! 02 9841 7441 | [info@newsouthhomes.com.au](mailto:info@newsouthhomes.com.au) | [www.newsouthhomes.com.au](http://www.newsouthhomes.com.au)**

Photographs and artist impressions are indicative only. They may include upgraded features above the standard inclusions such as, but not limited to; feature render, feature tiling, stack stone, landscaping, floor finishes, window furnishings, furniture, light fittings and decor items. Floor plan displays Classic facade. Please refer to the standard inclusions for details or speak with a New South Homes Sales Representative for more information. July 2021 v.1 Copyright All rights reserved. New South Homes Pty Ltd Builders License Number: 319502C.



# Roseville 51

Suitable for a 18m frontage

<b>Total Area</b>	475m <sup>2</sup>
<b>Width</b>	16.1m
<b>Length</b>	18.7m



<b>Dwelling A</b>	
<b>Ground Floor</b>	107.3m <sup>2</sup>
<b>First Floor</b>	99.02m <sup>2</sup>
<b>Garage</b>	22.41m <sup>2</sup>
<b>Porch</b>	1.40m <sup>2</sup>
<b>Alfresco</b>	7.73m <sup>2</sup>



<b>Dwelling B</b>	
<b>Ground Floor</b>	107.3m <sup>2</sup>
<b>First Floor</b>	99.02m <sup>2</sup>
<b>Garage</b>	22.41m <sup>2</sup>
<b>Porch</b>	1.40m <sup>2</sup>
<b>Alfresco</b>	7.73m <sup>2</sup>