

# KINGSCLIFF 17

SINGLE STOREY DESIGN SERIES



## HOME FEATURES

TOTAL AREA	160 m <sup>2</sup>
HOUSE WIDTH	8.5 m
HOUSE LENGTH	20.3 m

Family	5.7 x 4.8 m
Dining	2.5 x 2.6 m
Master Bedroom	3.5 x 3.5 m
Bedroom 2	3 x 3 m
Bedroom 3	3 x 3 m
Bedroom 4	3 x 3 m
Garage	5.5 x 3 m

No fuss living in a compact, slimline design.

The Kingscliff 17 has been designed specifically for narrow lots, but don't be mistaken...

All the New South Homes quality is still there. 4 generous bedrooms, two good sized bathrooms and a separate laundry. Not to mention a galley kitchen within an open plan living area. All the key features included at an affordable price.

## OTHER DETAILS

### Sizes Available

17

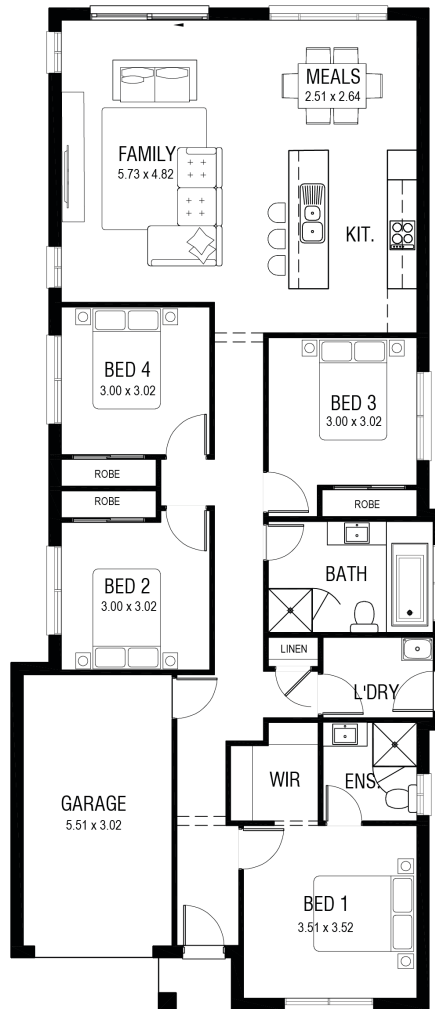
### Suitable For

Small Families  
Investors

### Facades Available

Axis  
Classic  
Cosmo  
Modern  
Vista





Photographs and artist impressions are indicative only. They may include upgraded features above the standard inclusions such as, but not limited to; feature render, feature tiling, stack stone landscaping floor finishes, window furnishings, furniture, light fittings and decor items. Please refer to the standard inclusions for details or speak with a New South Homes sales representative for more information. November 2020 v.1 Copyright All rights reserved. New South Homes Pty Ltd Builders License Number: 319502C.