



Wentworthville R62

Custom Duplex & Granny Flats

- Duplex with two-toned, mixed render facade
- 4 Bedrooms & Guest Room with built-in wardrobes and walk-in robe to Master Bathroom; Single car garage
- Floor tiles to Living & Kitchen, carpet to Bedrooms, shadow-line cornices and vertical window blinds
- Downlights throughout, air conditioning plus intercom and alarm security systems
- Large designer kitchen with a 40mm stone benchtop, undermount sink, polyurethane gloss cabinetry & dishwasher
- Bathroom with floor-to-ceiling wall tiles and feature wall, bathtub with two recessed niches & semi-framed showers

- 60m2 Granny Flat
- Brick facade exterior, and decorative brick and timber porch posts with sandstone capping
- 2 Bedrooms with built-in wardrobes, 1 Bathroom with Laundry
- Floor tiles throughout, shadow-line cornices and vertical blinds
- 20mm stone benchtop, polyurethane gloss cabinetry and dishwasher
- Bathroom with floor-to-ceiling wall tiles and feature wall, semi-framed shower screens
- Individual gas, water and electricity meters to both Duplexes and Granny Flats, as well as boundary fencing and landscaping

Duplex

Lot Size

1013m²

Total Area

272.5m²

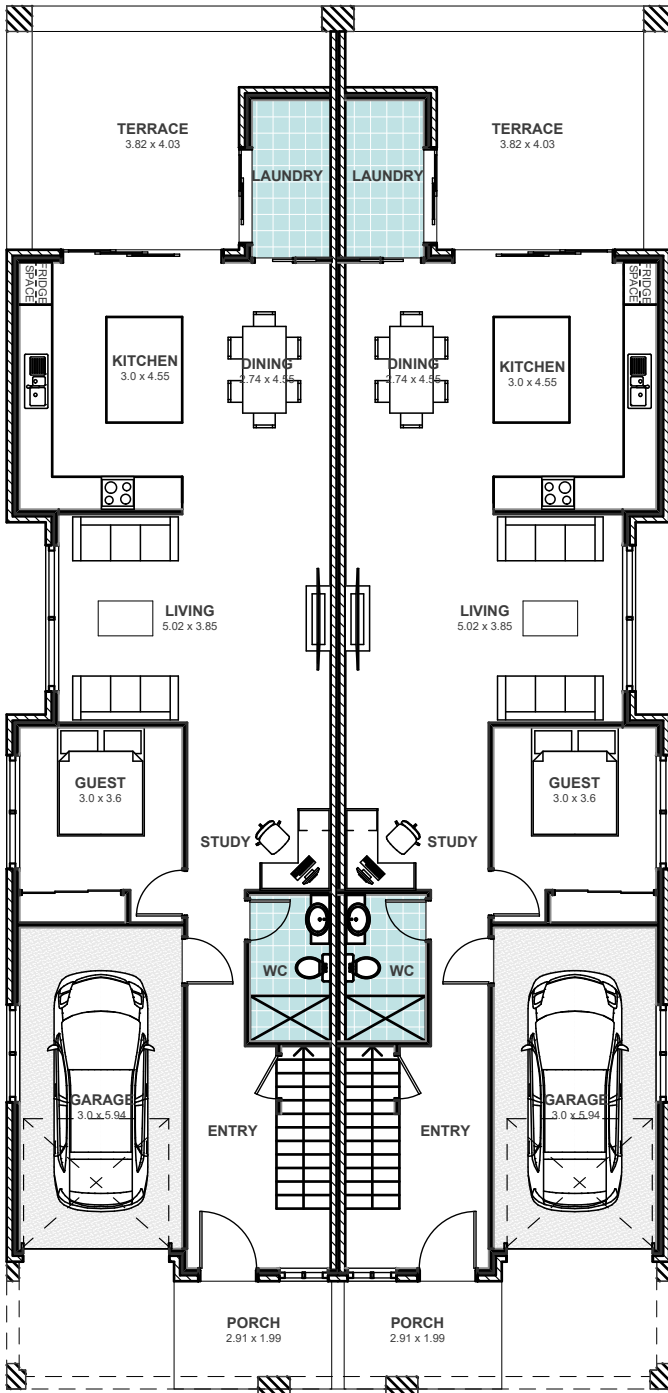
House Width

~6.1m

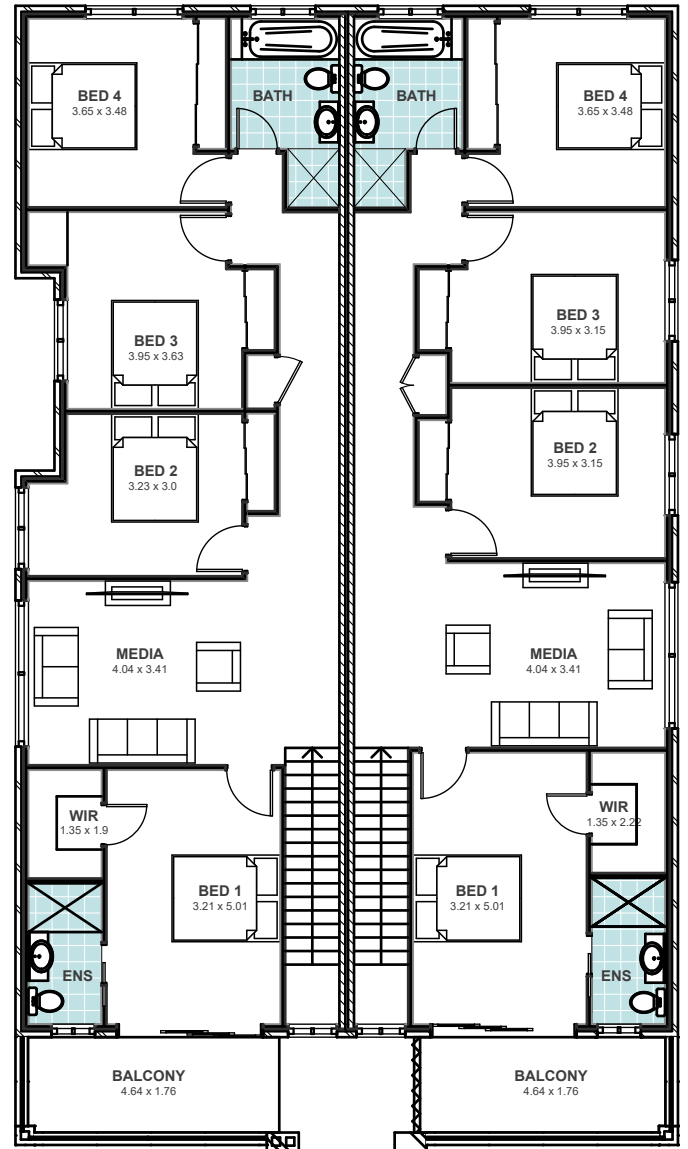
House Length

25.7m

 5
  3
  1



GROUND FLOOR



FIRST FLOOR

Granny Flat

Total Area

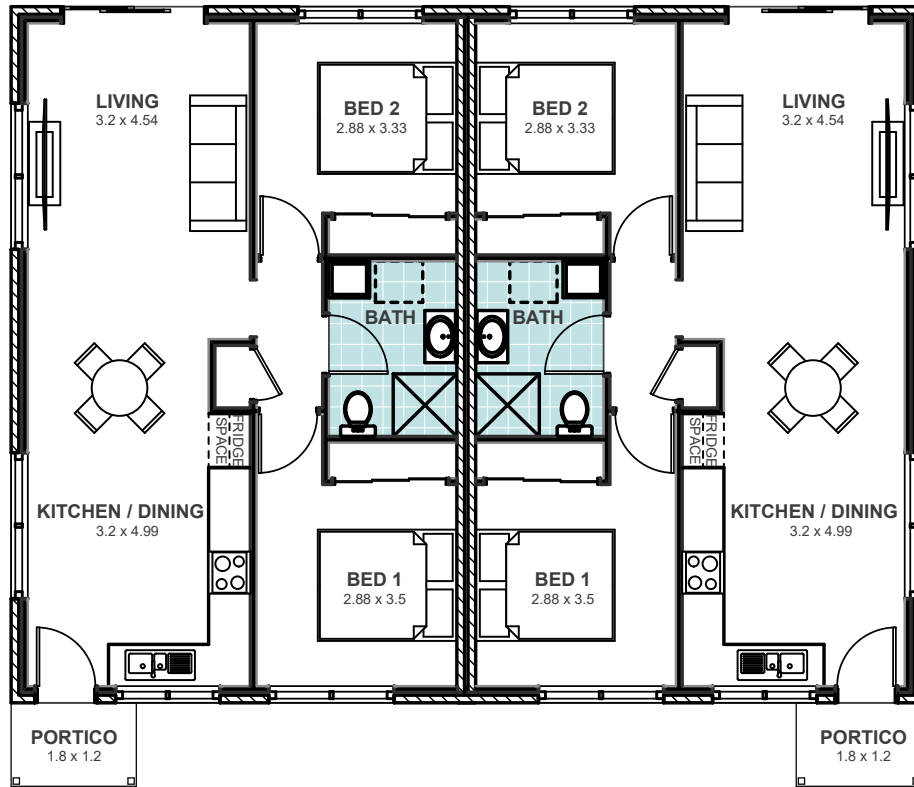
60m²

Granny Flat Width

6.5m

Granny Flat Length

11.2m



GRANNY FLAT



Earn FOUR rental incomes from one property!

SEE MORE: newsouthhomes.com.au/how-to-earn-four-rental-incomes-from-one-property/

