



# Pennant Hills C102

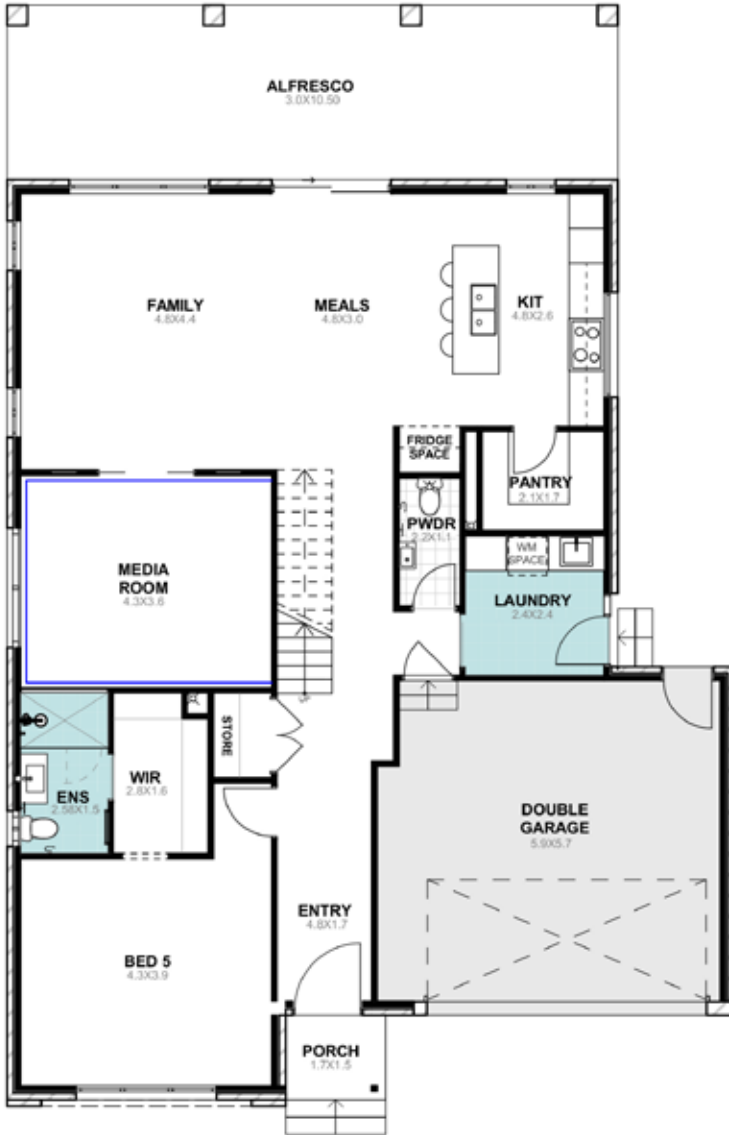
Mosman 35 Floor Plan

 5  4.5  2

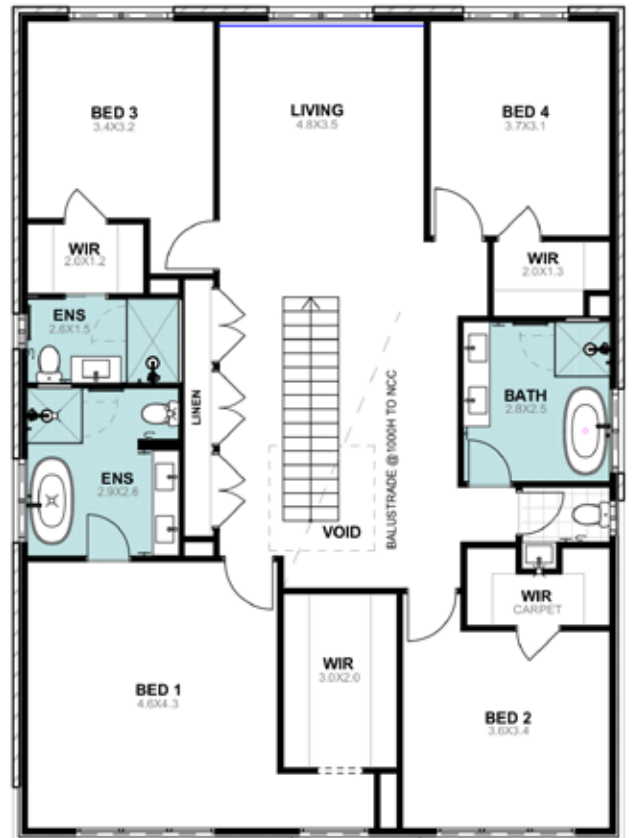
- 5 Bedrooms with large walk-in wardrobes and Ensuities to 3 Bedrooms
- Media Room downstairs and retreat upstairs
- Designer Kitchen featuring 40mm stone benchtop with waterfall edge and custom pendant lights above, melamine wood-look cabinetry, herringbone tiled splashback, double undermount sink, black gooseneck sink mixer and handles
- Smeg appliances; freestanding cooktop and oven, canopy rangehood and microwave
- Walk-in Pantry with melamine shelves
- Bathrooms with frameless shower screens, floor-to-ceiling wall tiles, black Caroma accessories and PC items
- Custom vanities with stone benchtop and melamine cabinetry in bathrooms and laundry
- Ducted air conditioning throughout
- Premium floor tiles to ground floor and carpet to first floor
- Staircase with pine posts and handrails, black balusters and carpet steps

# Mosman 35 (Modified)

Lot Size	600m <sup>2</sup>	Total Area	343m <sup>2</sup>	Width	13.5m	Length	18.9m
----------	-------------------	------------	-------------------	-------	-------	--------	-------



GROUND FLOOR



FIRST FLOOR