

# BALMORAL 38

DOUBLE STOREY DESIGN SERIES



## HOME FEATURES

<b>TOTAL AREA</b>	<b>349 m<sup>2</sup></b>
<b>HOUSE WIDTH</b>	<b>12.5 m</b>
<b>HOUSE LENGTH</b>	<b>21.5 m</b>

<b>Family</b>	5.43 x 5.04 m
<b>Meals</b>	6.98 x 3.78 m
<b>Living</b>	5.30 x 3.64 m
<b>Master Bedroom 1</b>	3.95 x 3.90 m
<b>Bedroom 2</b>	4.37 x 3.14 m
<b>Bedroom 3</b>	3.73 x 3.20 m
<b>Bedroom 4</b>	3.20 x 3.10 m
<b>Bedroom 5/ Study</b>	3.81 x 3.73 m
<b>Upstairs Media</b>	2.55 x 2.15 m
<b>Garage</b>	6.00 x 5.95 m

Big family, easy living! Looking for a home that will fit a large family with room to grow?

The Balmoral 38 is one of most popular designs for growing families. Incorporating a huge designer kitchen, four large living areas, five oversized bedrooms and plenty of storage, the Balmoral will fit all you love inside and a whole lot more!

## OTHER DETAILS

### Sizes Available

38, 39

### Suitable For

Growing Families

Multi-Generational Families

### Facades Available

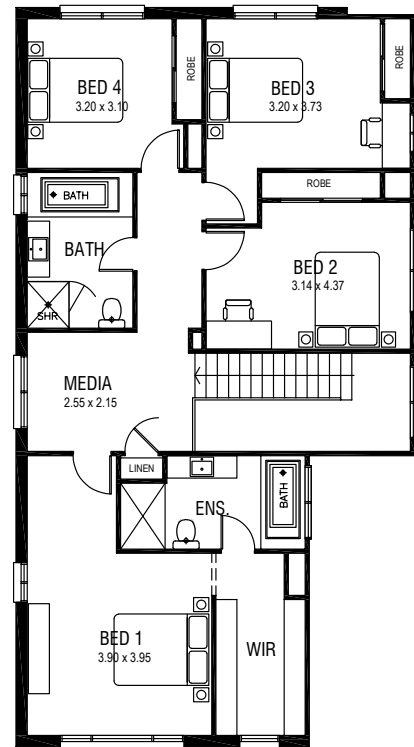
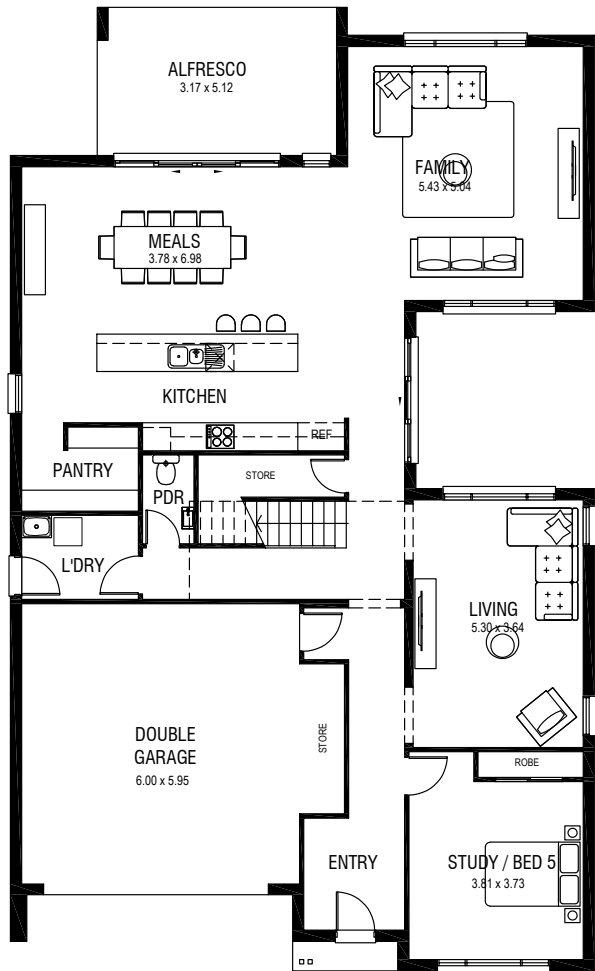
Aspire

Bentley

Classic

Coastal

Hampton



Photographs and artist impressions are indicative only. They may include upgraded features above the standard inclusions such as, but not limited to; feature render, feature tiling, stack stone landscaping floor finishes, window furnishings, furniture, light fittings and decor items. Please refer to the standard inclusions for details or speak with a New South Homes sales representative for more information. November 2020 v.1 Copyright All rights reserved. New South Homes Pty Ltd Builders License Number: 319502C.