



# Ashbury 24

Suitable for a 10m frontage

PLANTATION FACADE

 4  2.5  1



More  
Facades  
Available!

### Included in this home as part of our Essential Inclusions:

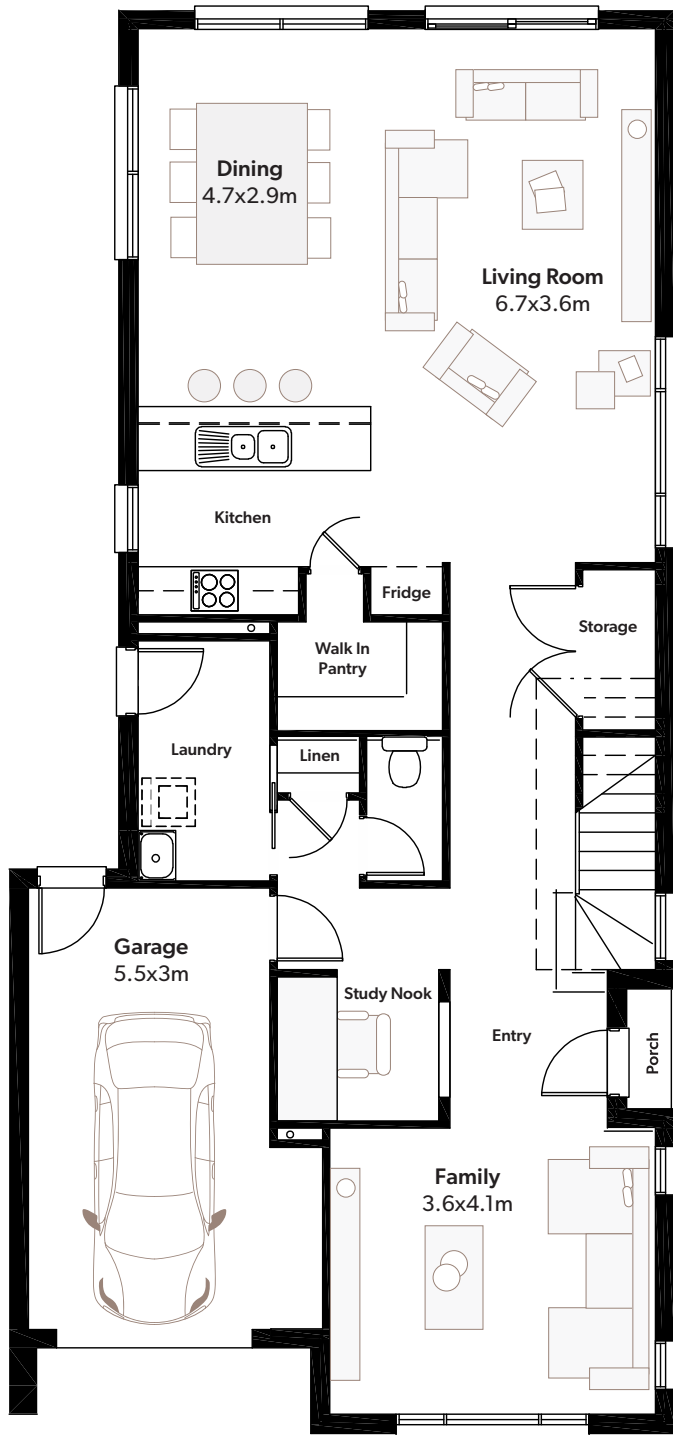
- 600x600mm Porcelain Tiles to all Common Ground Floor Areas
- PGH Brick Facade with Monier Roof Tiles
- Quality Wattle Two-Coat Paint System to Walls and Ceilings
- Laminex Kitchen Benchtop & 2100mm High Cupboards
- Westinghouse Kitchen Appliances
- 1500mm Wide Wall-Hung Polyurethane Gloss Bathroom Vanity

**Talk to your consultant today for pricing! 02 9841 7441 | [info@newsouthhomes.com.au](mailto:info@newsouthhomes.com.au) | [www.newsouthhomes.com.au](http://www.newsouthhomes.com.au)**

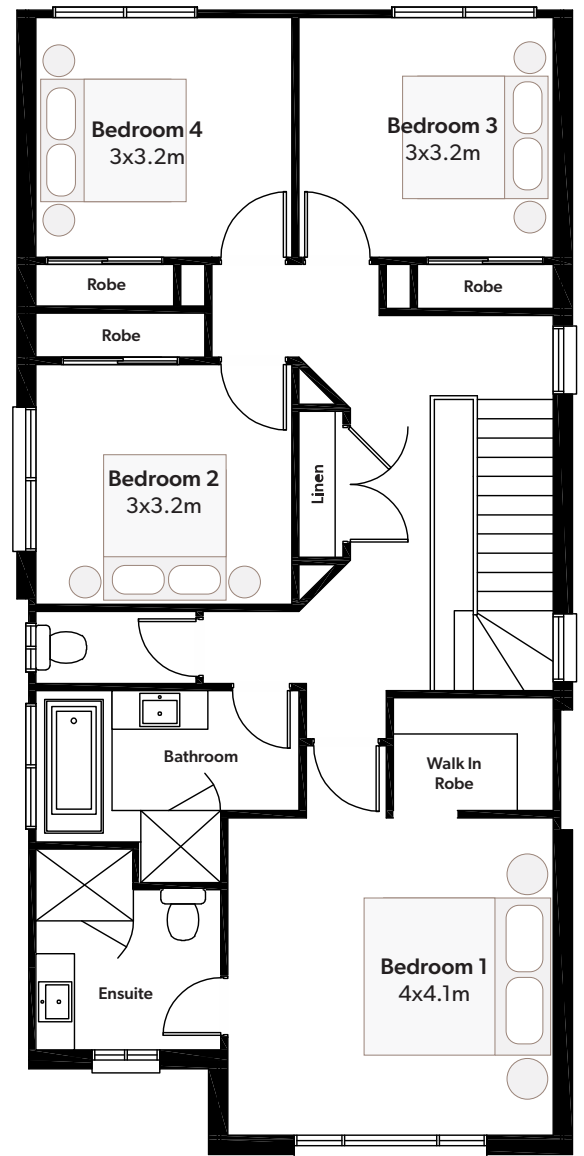
Photographs and artist impressions are indicative only. They may include upgraded features above the standard inclusions such as, but not limited to; feature render, feature tiling, stack stone, landscaping, floor finishes, window furnishings, furniture, light fittings and decor items. Floor plan displays Classic facade. Please refer to the standard inclusions for details or speak with a New South Homes Sales Representative for more information. July 2021 v.1 Copyright All rights reserved. New South Homes Pty Ltd Builders License Number: 319502C.

# Ashbury 24

Total Area	226m <sup>2</sup>	Width	8.3m	Length	17.8m	Minimum Lot Width	10m
Ground Floor	108m <sup>2</sup>	First Floor	96m <sup>2</sup>	Porch	1m <sup>2</sup>	Garage	21m <sup>2</sup>



GROUND FLOOR



FIRST FLOOR