



Westmead M1

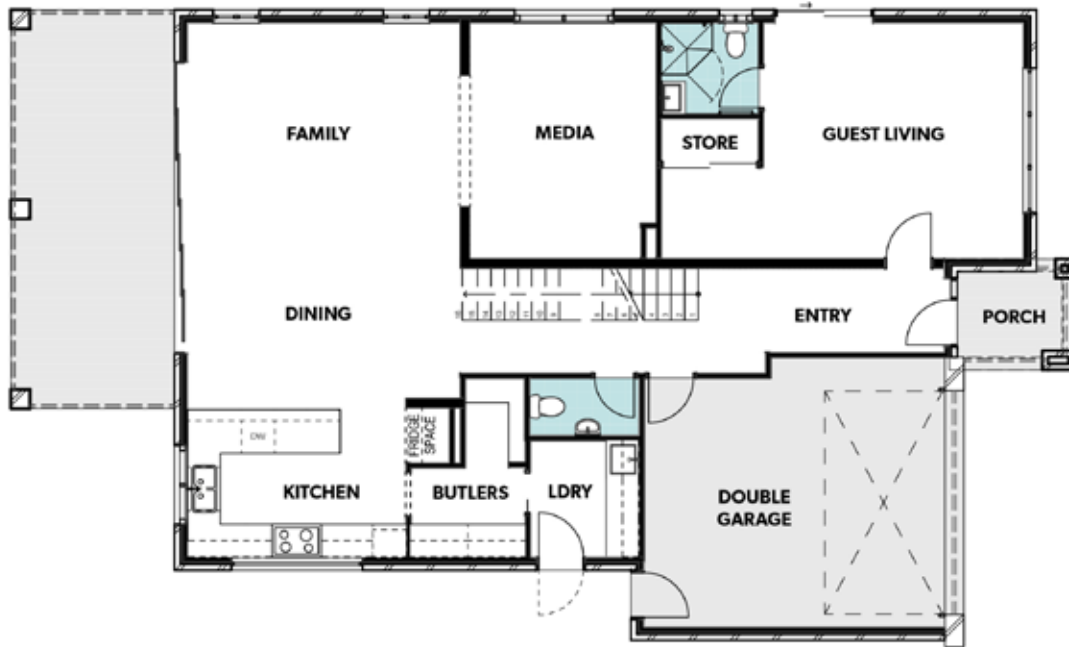
Mosman 35 Floor Plan

 4  3.5  2

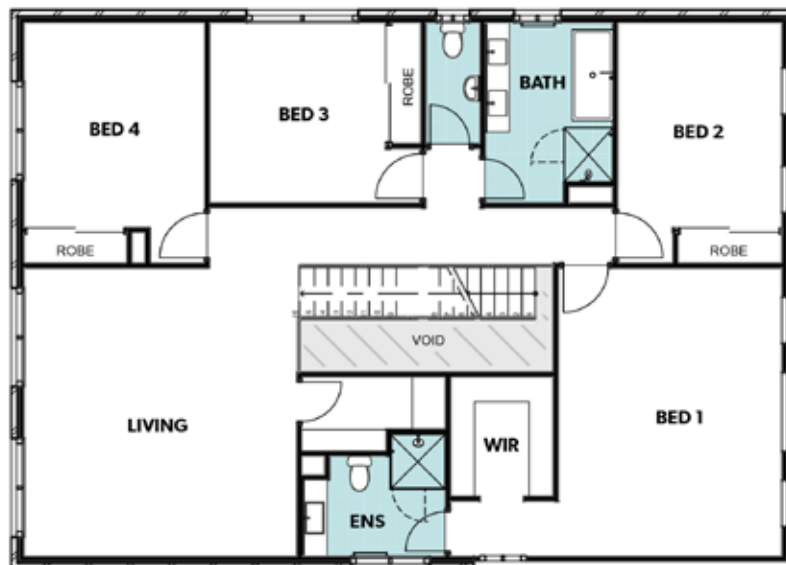
- Brick facade exterior with render feature walls.
- 4 Bedrooms, with large walk-in wardrobe and Ensuite to Master, and built-in wardrobes to remaining.
- Timber-look vinyl flooring to Living, Kitchen and Hallways, Carpet to Bedrooms. Staircase with American Oak veneer treads, timber and steel balustrade.
- Ducted air conditioning throughout.
- Designer Kitchen featuring 20mm stone benchtop with waterfall edge and pendant lights above, two-toned polyurethane cabinetry, canopy rangehood, double undermount sink, gooseneck mixer and Butlers Pantry.
- Full-height tiling to all Bathrooms, brick-bond pattern wall tiles and herringbone floor tiles.
- Spacious Guest Bedroom and Living area with wet bar.

Mosman 35

Lot Size	436m ²	Total Area	333m ²	House Width	11.7m	House Length	19.5m
----------	-------------------	------------	-------------------	-------------	-------	--------------	-------



GROUND FLOOR



FIRST FLOOR