



Seaforth 23

Suitable for a 11.5m frontage

BENTLEY FACADE

 4  2.5  1



CLASSIC



COASTAL

More
Facades
Available!

Included in this home as part of our Essential Inclusions:

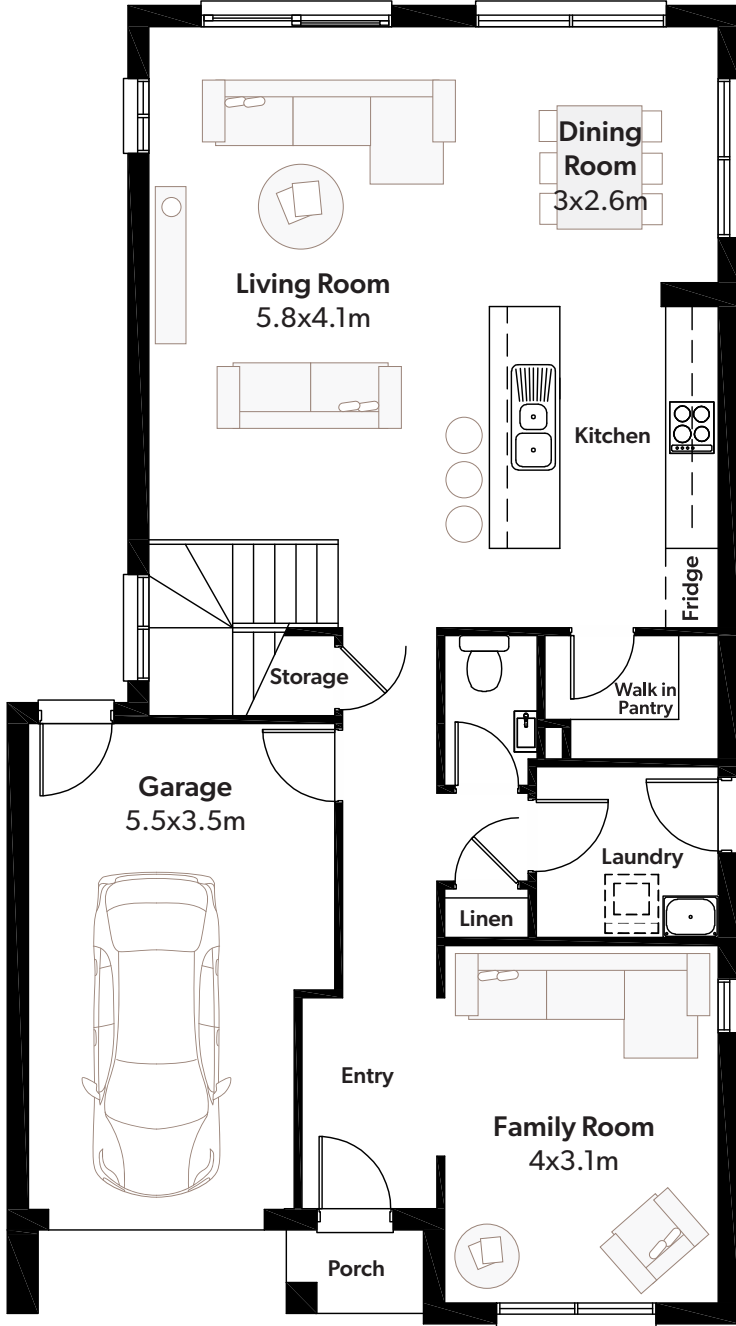
- 600x600mm Porcelain Tiles to all Common Ground Floor Areas
- PGH Brick Facade with Monier Roof Tiles
- Quality Wattle Two-Coat Paint System to Walls and Ceilings
- Laminex Kitchen Benchtop & 2100mm High Cupboards
- Westinghouse Kitchen Appliances
- 1500mm Wide Wall-Hung Polyurethane Gloss Bathroom Vanity

Talk to your consultant today for pricing! **02 9841 7441** | info@newsouthhomes.com.au | www.newsouthhomes.com.au

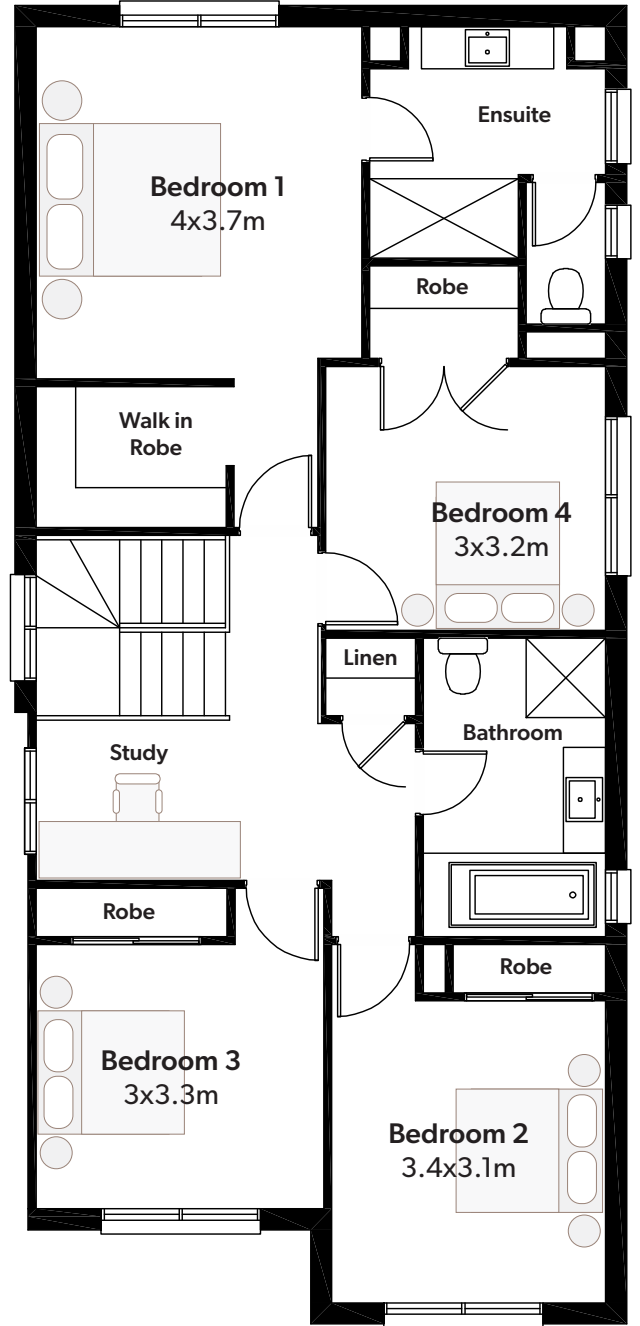
Photographs and artist impressions are indicative only. They may include upgraded features above the standard inclusions such as, but not limited to; feature render, feature tiling, stack stone, landscaping, floor finishes, window furnishings, furniture, light fittings and decor items. Floor plan displays Classic facade. Please refer to the standard inclusions for details or speak with a New South Homes Sales Representative for more information. July 2021 v.1 Copyright All rights reserved. New South Homes Pty Ltd Builders License Number: 319502C.

Seaforth 23

Total Area	210m ²	Width	8.3m	Length	15m	Minimum Lot Width	11.5m
Ground Floor	89m ²	First Floor	100m ²	Porch	1m ²	Garage	20m ²



GROUND FLOOR



FIRST FLOOR