



Hornsby B3

Custom Designed Floor Plan

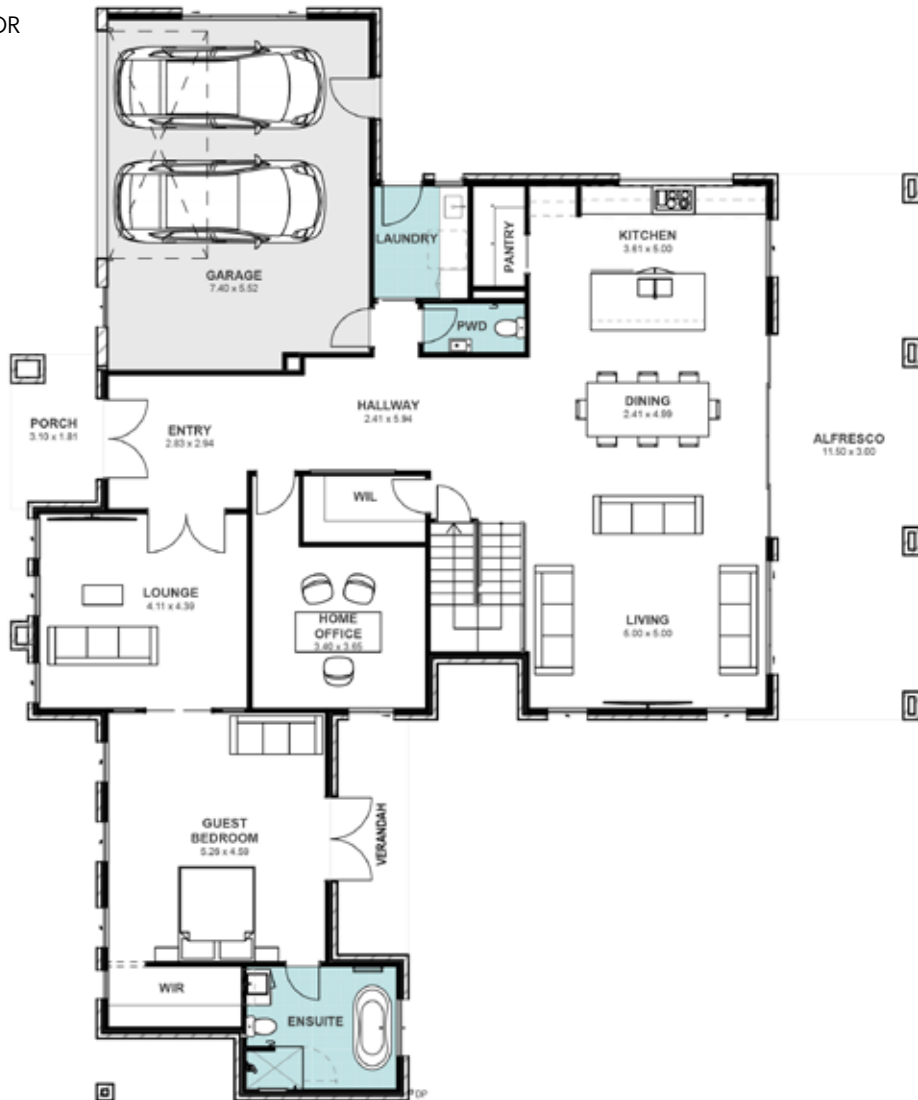
 4  4  2

- Hamptons façade and aluminium balustrades
- Bedrooms with walk-in wardrobes
- Large Kitchen with 40mm stone benchtop, 1200mm deep island with rear cabinetry, polyurethane cabinetry, undermount double-bowl sink, Phoenix Radii sink mixer, Westinghouse appliances and externally ducted rangehood.
- Laundry with custom cabinetry and stone benchtop
- Bathrooms with semi-frameless shower screens, overhead shower rose, shaving cabinets, and Piccolo 1500 Bathtub
- Victorian Ash staircase, feature wall niches and 92x18mm skirting, underfloor heating
- TV Antenna
- Air conditioner and LED downlights throughout

Custom Design

Lot Size	932m ²	Total Area	453m ²	House Width	22m	House Length	19.2m
----------	-------------------	------------	-------------------	-------------	-----	--------------	-------

GROUND FLOOR



FIRST FLOOR

