



# FORESTVILLE M12

MOSMAN 35 & GRANNY FLAT



## HOUSE INCLUSIONS

 7  4  3

- **MOSMAN 35 Floor Plan** (Panorama Facade)
- 60m<sup>2</sup> Granny Flat with attached Garage
- 5 Large Bedrooms, all with Walk-in Wardrobes
- Brick Veneer and Render Facade
- Concrete Roof Tiles in the Elabana profile
- Double lock-up Garage
- Designer Kitchen with 40mm Stone Benchtop, Glass Splashback, Smeg appliances & a large Walk-in Pantry
- Bathroom with Full-Height Tiling & Wall-Hung Vanity
- Covered Outdoor Alfresco
- LED Downlights Throughout, Ducted Air Conditioning, Video Intercom & Security System

# HOUSE FEATURES

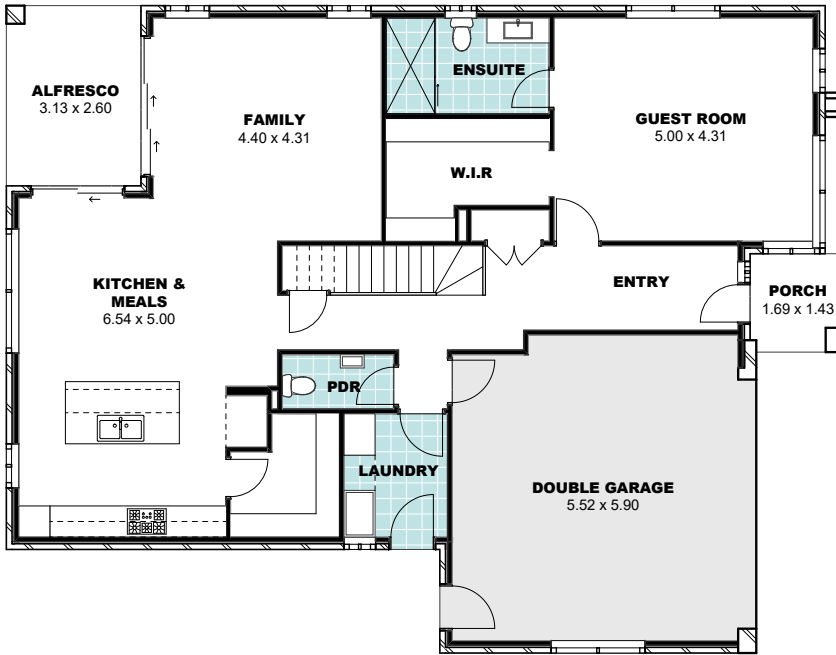
TOTAL AREA 312.4m<sup>2</sup>

LOT WIDTH 18.9m

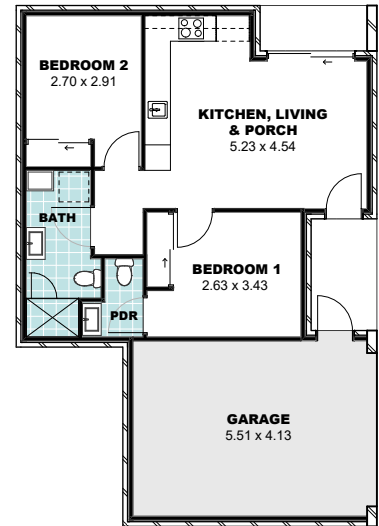
HOUSE WIDTH 12.50m

HOUSE LENGTH 15.8m

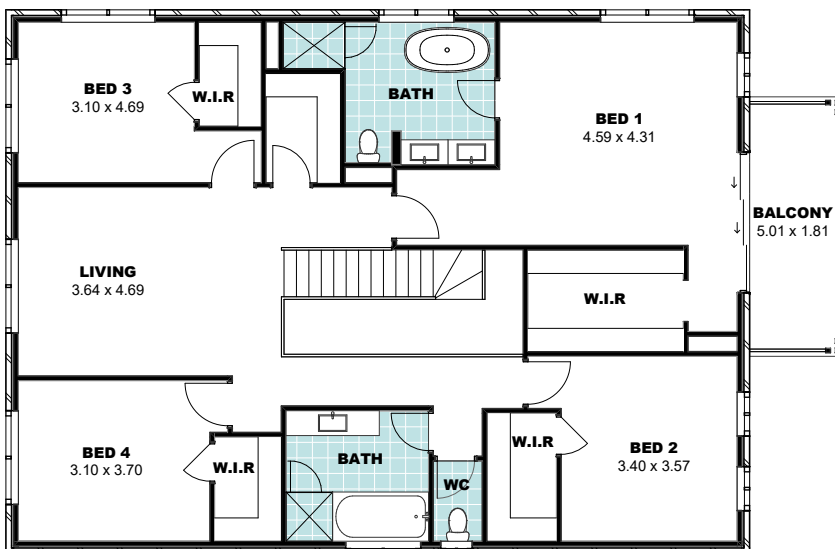
## HOUSE - GROUND FLOOR



## GRANNY FLAT - GROUND FLOOR



## HOUSE - FIRST FLOOR



## SITE PLAN

